

19.—*Description of a New Genus and Species of Termitobious  
Pselaphidae (Coleoptera).*—By A. RAFFRAY.

GASTEROTROPIS, nov. gen.

OBLONGUS, subparallelus, sat convexus. Caput transversum; fronte angustiore; temporibus valde obliquis et deflexis; cantho post-oculari valido; oculi magni, medio siti. Palpi maxillares validi, articulis 1 minuto, 2 elongato, apice clavato, 3 globoso, 4 magno, ovato, acuminato, apice appendice acuto praedito, 2 et 3 extus appendice minuto, setiformi munitis. Antennae crassae, articulis 1 magno, deplanato, quadrato, sequentibus valde transversis, 9, 10 majoribus, infra deplanatis, 11 magno, apice rotundato, infra dentato et excavato. Prothorax latitudine sua fere aequilongus, capite paululum angustior, subcordatus, trifoveatus. Elytra magna, humeris obliquis; lateribus postice sinuatis; angulis posticis notatis; margine posteriore sinuata; sutura postice utrinque tuberculata; stria suturali fere nulla, sed sutura praesertim basi, depressa; sulco dorsali lato, post medium evanescente. Abdomen elytris subaequale, late marginatum, basi cava transversa, profunda trilobata praeditum; segmentis dorsalibus, 1, 2, 3 subaequalibus, 1, 2 valde tricarinatis, 3 unicarinato, apice angulato, 4 ogivali, brevioribus. Metasternum magnum, postice emarginatum. Segmentis ventralibus 1 brevi, 2, 3 magnis, subaequalibus, 4, 5, 6 brevioribus, 7 (♂) magno, transverso, ovato; pygidio infra conspicuo. Coxis intermediis paululum et posticis magis distantibus, trochanteribus intermediis sat elongatis, apice oblique truncatis; pedes validi; femoribus parum incrassatis; tibiis simplicibus; tarsis mediocribus et gracilibus, articulis 1 minuto, triangulari, 2, 3 cylindricis, 3 secundo longiore; unguibus cinis minutis, aequalibus.

This new genus resembles *Tmesiphorus* by its carinate abdomen, the last antennal joints, deformed and excavated underneath in the ♂, and its general facies, but it is strongly differentiated by the shape of the maxillary palps, the last joint of which is simply ovate

instead of being externally and transversely dilated at apex as in *Tmesiphorus*. It is more closely related to the Indian genus *Aphanetrix*, Raffr., in which the last joint of the palps is also simple, and not dilated, but it differs from it in many points: the palps, also affecting the same shape, are much smaller than in *Aphanetrix* and much more slender, the head is longer than broad instead of being transverse, the antennae are elongated, comparatively slender, with all the joints plainly moniliform, and the club is simple; the abdomen bears traces only of very obsolete costae, which impart to *Aphanetrix* a very different appearance.

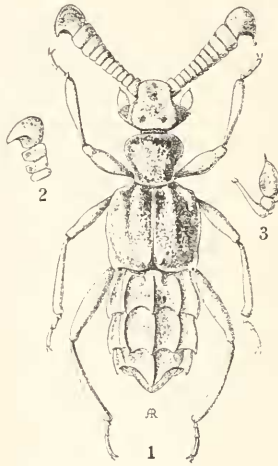
GASTEROTROPIS POWERI, n. sp.

Totus cinnamomeus, elytris paulo dilutioribus, antennis pedibusque obscurioribus, palpis et tarsis dilute testaceis; corpore toto alutaceo et setis squamulosis minutissimis et brevissimis obsito. Caput deplanatum; fronte lata, late sed parum profunde impressa, antice recte truncata; in vertice foveis duabus liberis; temporibus et cantho oculari una valde obliquis, cantho oculari oculos paululum superante et apice obtuso; margine postica leviter sinuata, abrupta; collo conspicuo. Prothorax convexus, lateribus post medium compressus et fovea laterali oblonga leviter sinuatus, foveola ante basali media minuta. Elytra latitudine suo fere aequilonga; humeris valde obliquis; lateribus pone humeros vix perspicue et posticis magis sinuatis; angulis posticis notatis et leviter prominulis; stria suturali fere nulla sed sutura praesertim basi, late depressa; sulco dorsali lato, basi profundo, pone medium evanescente; sutura ante apicem utrinque tuberculo triangulari, deplanato et acuto armata. Abdomen valde carinatum. Metasternum sulcatum. Segmento 7 ventrali, transversim ovato, depresso et albido ciliato. Tibiis anticis ad apicem leviter elevatis, intermediis ante apicem intus perparum sinuatis, postices vix incurvis. ♂.

Long. 3.50 mm.

On the elytra there is a moderately raised but wide and rounded carina formed by the dorsal furrow and the depression of the sutural part, the outer posterior angles are somewhat prominent, and very slightly reflexed obliquely, the posterior border is sinuate, and the sutural angle rounded; above the angle and on each side there is an horizontally directed triangular prominent tubercle which is acuminate behind. The margin of the abdomen is wide and slightly rounded outwardly especially on the first tergite, the carinae are very strong and nearly black at apex.

My friend, Dr. L. Péringuey, the Director of the South African Museum, has sent me a ♂ example of this species, found by Brother J. H. Power, at Kimberley, Cape Province, in the termitarium of *Termes trinervius*.



1. *Gasterotropis poweri*.
2. Ultimate joints of ♂ viewed from underneath.
3. Maxillary palp.